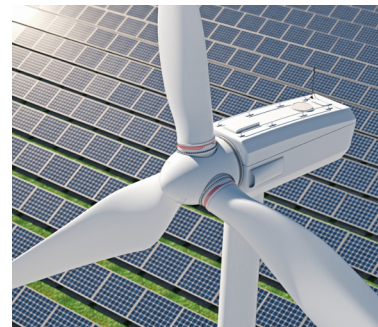


## Diversification with infrastructure investments

Infrastructure projects are characterised by their significant impact on society as they contribute to its development and prosperity. Investments in infrastructure can cover a diverse and varied range. Projects of particular importance, aside from investments in the segments of communication (e.g. fibre-optics networks), social infrastructure (e.g. senior living residences or hospitals), and transportation (e.g. bridges), include investments in renewable energies as part of the effort to accomplish the energy transition and achieve the global climate targets.

In the field of alternative investments, infrastructure funds are seeing a significant inflow of capital. From a global perspective, the investment volume of infrastructure funds has increased continuously by 18% per year over the last five years, according to a recent study by Preqin.



## Your specialist for infrastructure funds

Specialising in the administration of real estate funds, the INTREAL Group is also making its long-term expertise available to providers of infrastructure funds, offering client-friendly and high-end solutions both in Germany and Luxembourg. For now, the market focus is on investments in the renewable energy sector.

As our fund partner, you will benefit from our specialised team of experts and our state-of-the-art IT systems, which are thoroughly field-tested in the real estate sector. Our SAP loan management tool (CML) makes us one of the few providers on the market that are capable of mapping a dedicated loan management within the scope of infrastructure financing. The bison.box reporting software (control IT GmbH) enables INTREAL to provide investors with an optimal drilldown through the fund structure down to the asset level.

### SERVICE KVG



#### A partnership of specialists

The INTREAL platform allows you to take advantage of all the opportunities offered by a service KVG without having to set one up yourself. We ensure full compliance with all legal and regulatory requirements for the operation and administration of a management company and its funds. You – as our fund partner – contribute your expertise with regard to the acquisition and sale as well as the ongoing management of assets and funds.

Furthermore, established and newly licensed fund managers may outsource their back office to us.

### AIFM AND CENTRAL ADMIN



#### Your gateway to Europe

INTREAL Luxembourg is licensed as an AIFM and central administrator for real estate and infrastructure funds as well as private debt and fund of funds for these asset classes.

With the license for infrastructure funds, we can launch and manage all relevant infrastructure investment solutions for you, such as SIF, RAIF or ELTIF.

This will let you focus on the assets while we cover all regulatory and administrative aspects.



*We provide you with the platform to implement long-term infrastructure investments with a range of fund structures.*

## Key benefits at a glance

### ✓ Specialised in the administration of real estate and infrastructure funds

- ◆ INTREAL has set up a team of experts with comprehensive know-how in the infrastructure sector that can provide end-to-end support to you
- ◆ Our team draws on the collective know-how of more than 500 employees in the INTREAL Group

### ✓ Key account management

Key account manager throughout the entire fund lifecycle

### ✓ No conflicts of interest

Since INTREAL initiates funds exclusively with external managers and financial advisors, there are no conflicts of interest

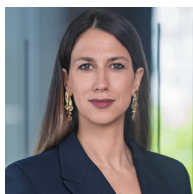
### ✓ Modern and proven IT systems

INTREAL operates excellent systems, including loan management systems. Having upgraded to the latest generation of our SAP S4 / HANA accounting software, we are optimally set up for the future

### ✓ Comprehensive reporting solutions

- ◆ Improved investability by implementing the **look-through approach**
- ◆ **State-of-the-art reporting solutions** for any investor and management group handling German and Luxembourg vehicles – **as a one-stop shop**

## Your contacts



### Ilva Diaco

Conducting Officer  
Portfolio Management  
& Business Development  
INTREAL Luxembourg  
T +352 288 013-33  
idiaco@intreal.com



### Jan Ferdinand

Executive Director Sales  
INTREAL (Germany)  
T +49 40 377077-938  
jferdinand@intreal.com



### Markus Schmidt

Head of Business Development  
Infrastructure  
INTREAL (Germany)  
T +49 40 377077-206  
mschmidt@intreal.com

IntReal International Real Estate  
Kapitalverwaltungsgesellschaft mbH  
Ferdinandstrasse 61  
D-20095 Hamburg (headquarters)

IntReal International Real Estate  
Kapitalverwaltungsgesellschaft mbH  
Erlenstrasse 2  
D-60325 Frankfurt am Main

IntReal Luxembourg S.A.  
6B, rue du Fort  
Niedergrünwald  
L-2226 Luxembourg

**www.intreal.com | info@intreal.com | T +49 40 377077 000**

Disclaimer | This document may not be reproduced or distributed without explicit approval from IntReal International Real Estate Kapitalverwaltungsgesellschaft mbH (INTREAL). In case of infringement, we do not assume any liability for possible damages. The information presented here was prepared by INTREAL with due care and confidence in the accuracy of the data provided by third parties. However, we cannot accept any liability for the accuracy, completeness or validity of this information.